



**Imperial[®]
Steel**

ABOVEGROUND VESSEL



GENERAL SPECIFICATIONS

- Designed and built to ASME Section VIII, Division 1
- Complies with NFPA 58
- Registered with national board
- Registered with CRN to export to Canada (only 500 WG & 1000 WG)
- Rated at 250 PSI from -20° to 125°F Vacuum purged - Ready to fill
- Rego valves
- Rochester liquid level gauges standard with steel gears and snap on dial Superior Powder coated finish
- Aboveground steel galvanized domes included with purchase



**Customer service
and Sales**

luis@imperialsteelgroup.com

19179 Blanco Rd. Ste 105-440
San Antonio, Texas 78258

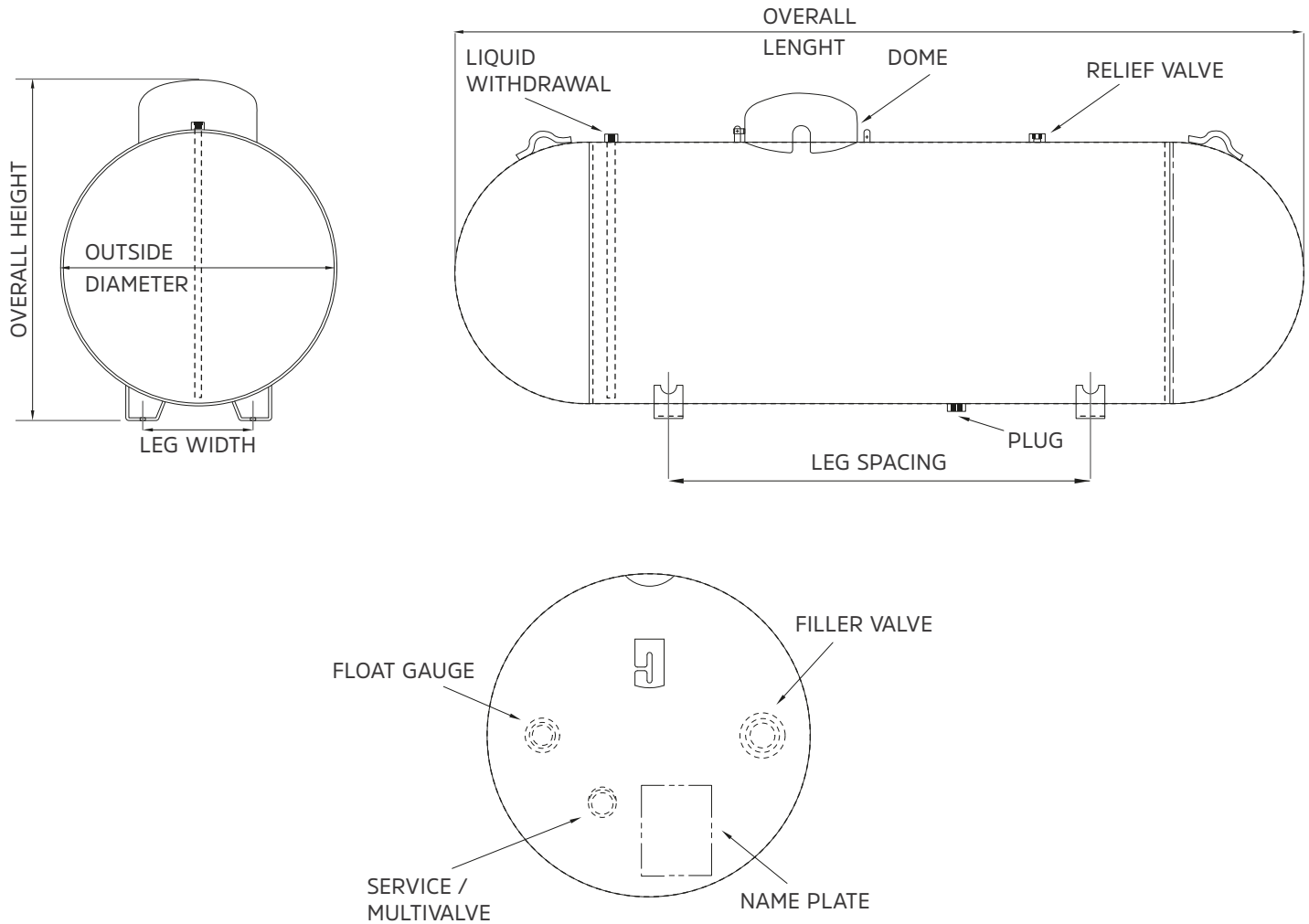
USA: +1 (210) 401-0156

Standard WG offering: 250, 500 & 1000
WG Standard colors: WHITE / TAN / GRAY



**Imperial[®]
Steel**

ABOVEGROUND VESSEL



WATER CAPACITY	OUTSIDE DIAMETER	HEAD TYPE	OVERALL LENGTH	OVERALL HEIGHT	LEG WIDTH	LEG SPACING	EMPTY WEIGHT	QUANTITY	
								FULL LOAD	PER STACK
*250 WG	31 1/2"	HEMI	7'-4 1/8"	3'-3 7/16"	12 3/4"	3'-6"	473 LBS.	63	9
500 WG	37 7/16"	HEMI	9'- 9 11/16"	3'-10 3/16"	15"	5'-0"	904 LBS.	30	6
1000 WG	40 15/16"	HEMI	16'- 1/16"	4'-1 7/8"	16 1/4"	9'- 1/8"	1720 LBS.	15	5

All vessel dimension are approximate
*Drain plug is not available